



Rhino Linings®

CASE STUDY

Category: WWTP – Sewage Pump Station

Project: Leopold, Victoria

Applicator: Colour Tech Coatings

Rhino Products: Rhino PP1195 Pure Polyurea



These photos show blast preparation of Leopold Pump Station No. 1, a large diameter underground cast insitu reinforced concrete pumping station.

Colour Tech Coatings was contracted to Rhino coat the concrete wall of the pump station to protect the surface from H₂S gas attack which over time causes corrosion and pitting of the concrete wall.

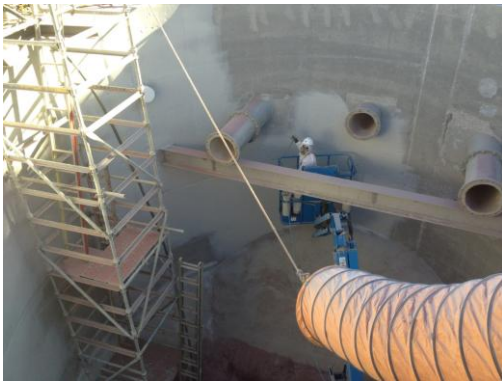
Before applying Rhino Linings PP1195 pure polyurea, Colour Tech Coatings carried out blast preparations to meet ICRI standards. This standard sets a guideline for the most suitable concrete surface profile (CSP) which offers excellent bonding for spray applied coatings. If incorrectly prepared, the bond may become unstable and the coatings delaminate.

Large areas of the pump station required special overlapping techniques and membrane termination, which after the application of the Rhino PP1195 pure polyurea coating helps in preventing sewer gas from attacking the concrete.

Rhino PP1195 pure polyurea was specified for this project due to its excellent corrosion protection, chemical resistance and flexibility for situations such as these in Waste Water Treatment plants and containment issues.

In addition, Rhino PP1195 is a rapid cure seamless, yet durable coating, allowing for fast completion of projects, minimises downtime and ensures long-term protection.

Work completed by Rhino Linings Approved Applicator, Colour Tech Coatings based in Moolap, Victoria.



www.rhino linings industrial.com.au

1300 887 780

info@rhino linings.com.au

Rhino Linings Australasia Pty Ltd

501-505 Olsen Ave

Molendinar Qld 4214

+61 7 5585 7000

www.rhino linings.com.au